



HANDCRAFTED FURNITURE

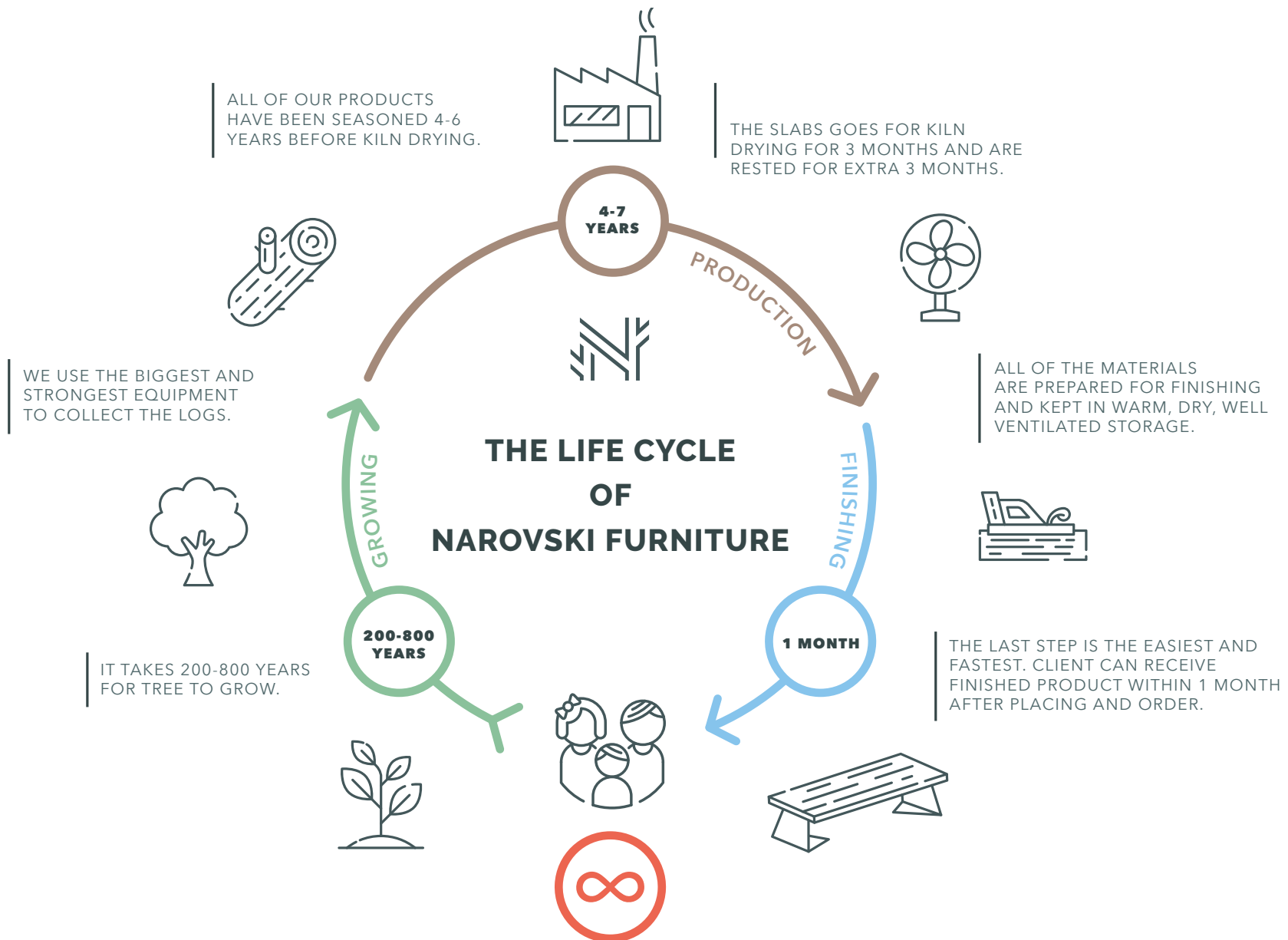


Welcome to the NAROVSKI family table!

Narovski solid wood tables bring together values that have been passed on from generation to generations. Our tables are made from very old trees that have been growing from 200 to 800 years, and that have now become endangered. We give a second life to these trees!

Our careful processing cycle involves holding the sawn surfaces for up to 5 years, then drying them for a 3 month cycle and storing it in a warehouse for a remaining 6 months before it becomes available to customer. This is the process that provides the best possible quality for Your Narovski table.

Narovski tables hold the strength of centuries, so let's respect this gift of nature and allow it to breathe in our families for generations to come!





- Type: Single piece dining table surface
- Legs: Narovski Type 9, powdercoated steel
- Size: 2640 mm x 950 mm x 53mm
- Wood: Oak (Quercus robur)
- Finish: Rubio Monocoat 2C Ash Grey oil
- Details: Natural shape edges, open cracks and knots



Single piece surface gives you unique opportunity to see the natural shape of tree.



Each of our table is numbered, to be identified even after 20 Years.





Type: Two piece book-matched dining table surface

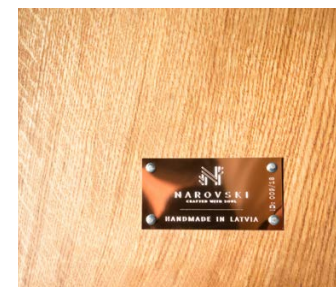
Legs: Narovski Type 6, powdercoated aluminium

Size: 3000 mm x 1050 mm x 45 mm

Wood: Oak (Quercus robur)

Finish: Rubio Monocoat 2C Pure oil

Details: Natural shape edges, open cracks and knots, butterfly joints





Type: Two piece book-matched dining table surface

Legs: Narovski Type 8, solid wood

Size: 3000 mm x 1050 mm x 40 mm

Wood: Oak (Quercus robur)

Finish: Rubio Monocoat 2C Pure oil

Details: Straight edges, Open cracks and knots, complete with solid wood benches



Table surface with straight edges will fit in different and more classic interior designs.





Table legs made out of aluminium adds very fine and crisp lines to the details.



Type: Two piece book-matched dining table surface

Legs: Narovski Type 6, powdercoated aluminium

Size: 2820 mm x 1000 mm x 45 mm

Wood: Oak (Quercus robur)

Finish: Borma Liming Wax

Details: Straight edges, Cracks and knots filled with epoxy





Type: Single piece conference table surface

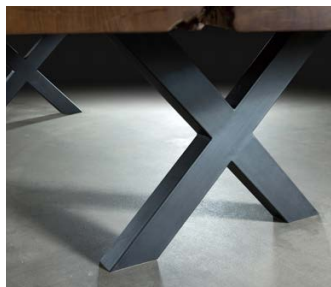
Legs: Narovski Type 2, powdercoated steel

Size: 4200 mm x 1300 mm x 93mm

Wood: Oak (Quercus robur)

Finish: Rubio Monocoat 2C Pure oil

Details: Natural shape edges, butterfly joints, open cracks and knots



We have single piece slabs in up to 8m length.



Natural shape cross-cut surface.





Type: Cross-cut coffee table surface

Legs: Narovsi Type 3, clear-coated steel

Size: 1200 mm x 800 mm x 60 mm

Wood: Elm (*Ulmus glabra*)

Finish: Rubio Monocoat 2C Pure oil

Details: Natural shape, exposed bark





- Type: Cross-cut coffee table surface
- Legs: Different table leg options
- Size: D-950 mm x 75 mm
- Wood: Oak (Quercus robur)
- Finish: Rubio Monocoat 2C Pure oil
- Details: Natural shape, cracks filled with epoxy





Polished copper finish for table legs available as option.



Butterfly key joints allows the ability to add creativity and functional strength to surface.





Type: Two piece book-matched dining table surface

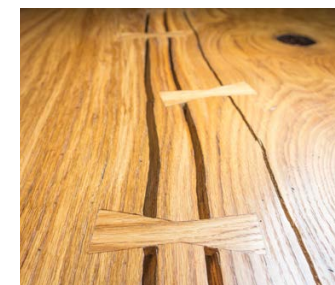
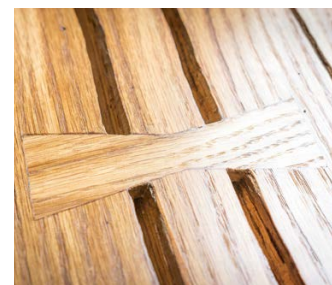
Legs: Narovski Type 5, powdercoated steel

Size: 3100 mm x 1100 mm x 45 mm

Wood: Oak (Quercus robur)

Finish: Rubio Monocoat 2C Pure oil

Details: Natural shape edges, open cracks and knots, butterfly joints





Type: Single piece computer table surface

Legs: 10mm clear-coated steel, clients design

Size: 1150 mm x 700 mm x 45 mm

Wood: Ash-Tree (*Fraxinus excelsior*)

Finish: Rubio Monocoat 2C Super White oil

Details: Natural shape edges, cracks filled with epoxy



Each of our table surface is one of a kind - you can not repeat what nature has done.

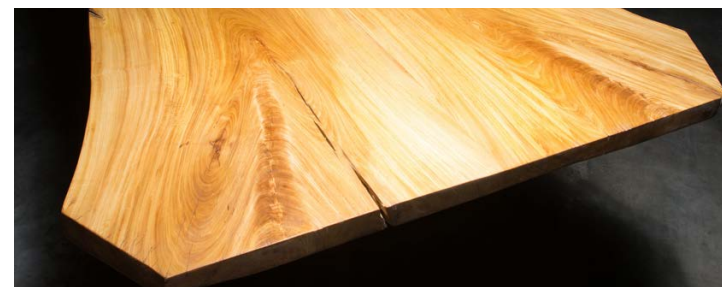


Book-matched surface, made out of two mirrored slabs.



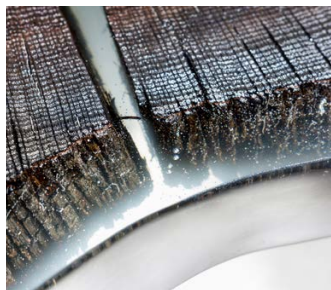


Type:	Two piece book-matched dining table surface
Legs:	Narovski Type 9, clear-coated steel
Size:	3100 mm x 1100 mm x 45 mm
Wood:	Elm (Ulmus glabra)
Finish:	Rubio Monocoat 2C Pure oil
Details:	Natural shape edges, open cracks and knots





- Type: Cross-cut coffee table surface
- Legs: Round tube support, powdercoated steel
- Size: D-850 mm x 50 mm
- Wood: Bog Oak
- Finish: Rubio Monocoat 2C Pure oil
- Details: Natural shape, filled with epoxy



Bog oak is one of the rarest wood in the world.
This one is about 6000 years old.

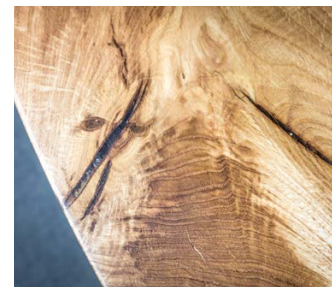


All surfaces can be cut to clients desired shape. In this case - round.





Type:	Two piece book-matched coffee table surface
Legs:	Narovsi Type 3, clear-coated steel
Size:	D-1350 mm x 45 mm
Wood:	Oak (Quercus robur)
Finish:	Rubio Monocoat 2C Pure oil
Details:	Round shape, epoxy crack fill





Type: Two piece book-matched office table surface

Legs: Narovski Type 6, powdercoated steel

Size: 3250 mm x 1950 mm x 50 mm

Wood: Ash-Tree (*Fraxinus excelsior*)

Finish: Rubio Monocoat 2C Pure oil

Details: Natural shape edges, open cracks, epoxy fill





Each side of surface is treated equally - whether you see it or not.





Type: Two piece book-matched dinner table surface

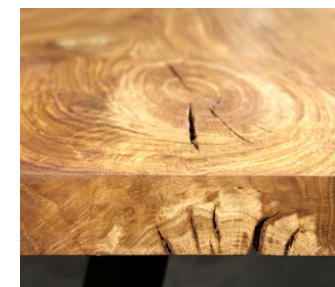
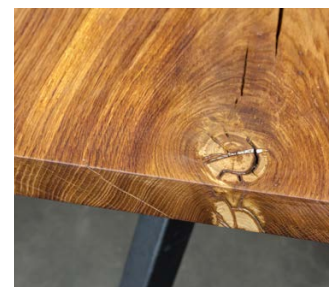
Legs: Narovski Type 4, powdercoated steel

Size: 3100 mm x 1200 mm x 45 mm

Wood: Oak (Quercus robur)

Finish: Rubio Monocoat 2C Pure oil

Details: Natural shape edges, open cracks, butterfly joints





Type: Two piece book-matched dinner table surface

Legs: Narovski Type 10, powdercoated steel

Size: 3100 mm x 1100 mm x 45 mm

Wood: Oak (Quercus robur)

Finish: Rubio Monocoat 2C Pure oil

Details: Natural shape edges, open cracks and knots, butterfly joints





All table legs are custom made to fit chosen table surface.

To recognize tables, the logo of the Narovski is burnt in at the both ends of the surface.





Type: Two piece book-matched dining table surface

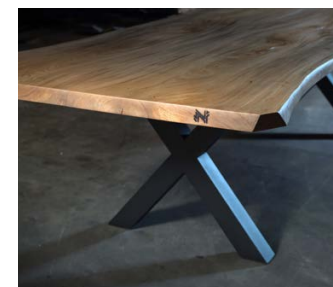
Legs: Narovski Type 2, powdercoated aluminium

Size: 3220 mm x 1000 mm x 50 mm

Wood: Elm (Ulmus glabra)

Finish: Rubio Monocoat 2C Castle Brown oil

Details: Natural shape edges, open cracks and knots





Type: Single piece coffee table surface

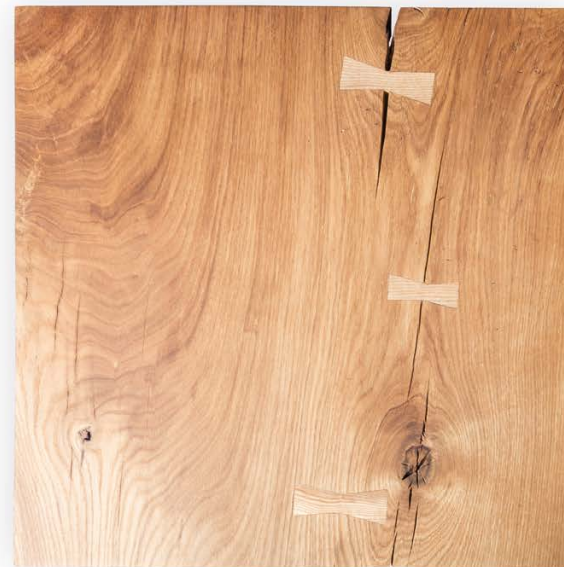
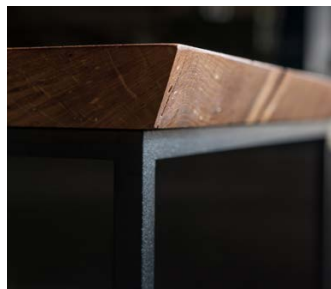
Legs: Clients design, powdercoated steel

Size: 400 mm x 400 mm x 30 mm

Wood: Oak (Quercus robur)

Finish: Rubio Monocoat 2C Pure oil

Details: Straight edges, open cracks and knots, butterfly joints







PROJECT: RESTAURANT "VAIRAK SAULES", RIGA, LATVIA
INTERIOR DESIGNER: ANDA OZOLIŅA



PROJECT: RESTAURANT "VAIRAK SAULES", RIGA, LATVIA
INTERIOR DESIGNER: ANDA OZOLIŅA



PROJECT: PRIVATE CUSTOMER, SIGULDA, LATVIA



PROJECT: PRIVATE CUSTOMER, SALASPILS, LATVIA
INTERIOR DESIGNER: NATALIJA KONKOVA



INTERIOR DESIGN SHOWROOM "MC2", RIGA, LATVIA



INTERIOR DESIGN SHOWROOM "MC2", RIGA, LATVIA



INTERIOR DESIGN SHOWROOM "LETT", RIGA, LATVIA



INTERIOR DESIGN SHOWROOM "LETT", RIGA, LATVIA

WWW.NAROVSKI.LV

